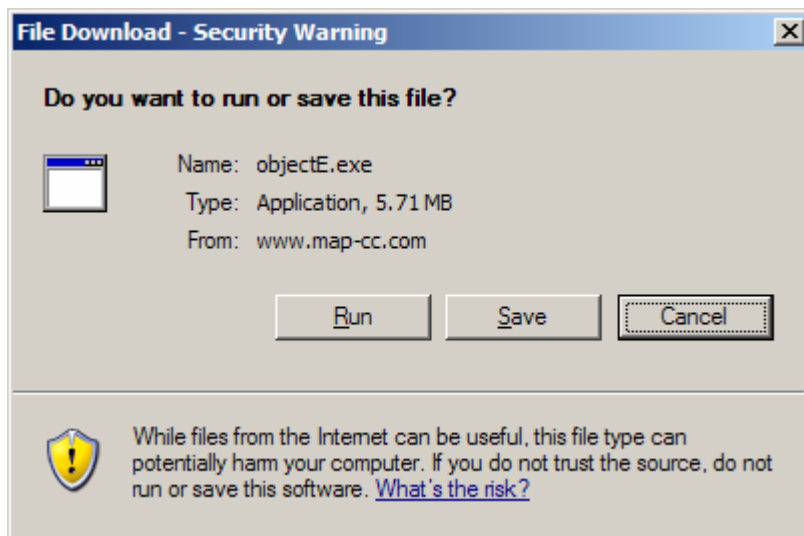


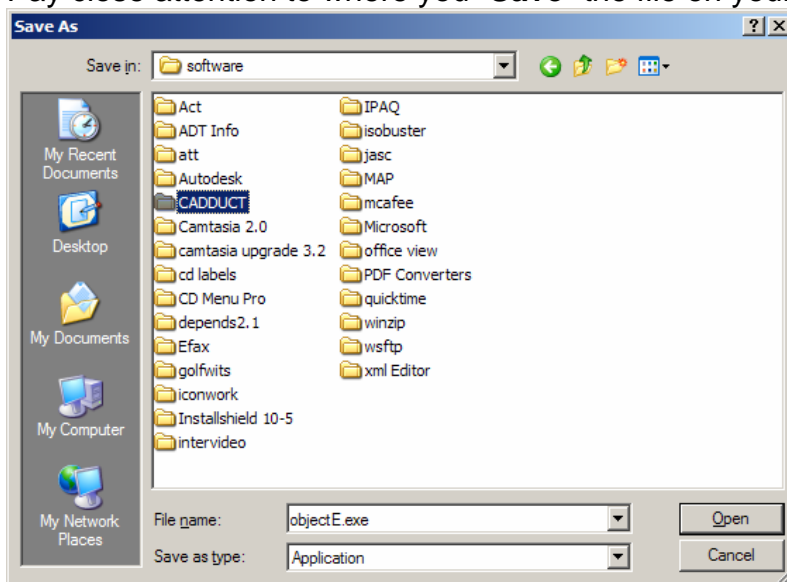
CAD-Duct Solids Object Enabler is a free downloadable collaboration utility that enables ObjectDBX host applications (i.e. AutoCAD, AutoCAD LT, Volo-View and Navis Works) to view CAD-Duct / CAD-Mech Fittings.

Note: Older versions of the Object Enabler cannot open drawings created by newer versions of CAD-Duct or CAD-Mech. Make sure you download the latest object enabler version from the map-cc website.

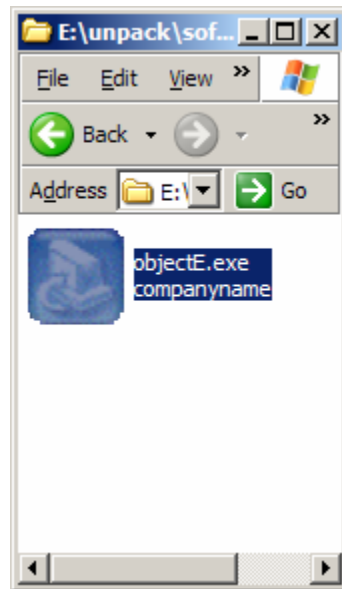
1. To load the object enabler, go to http://www.map-cc.com/updates_and_installers.htm and select “Download the latest Object Enabler Object Enabler X.XX.XXX”.



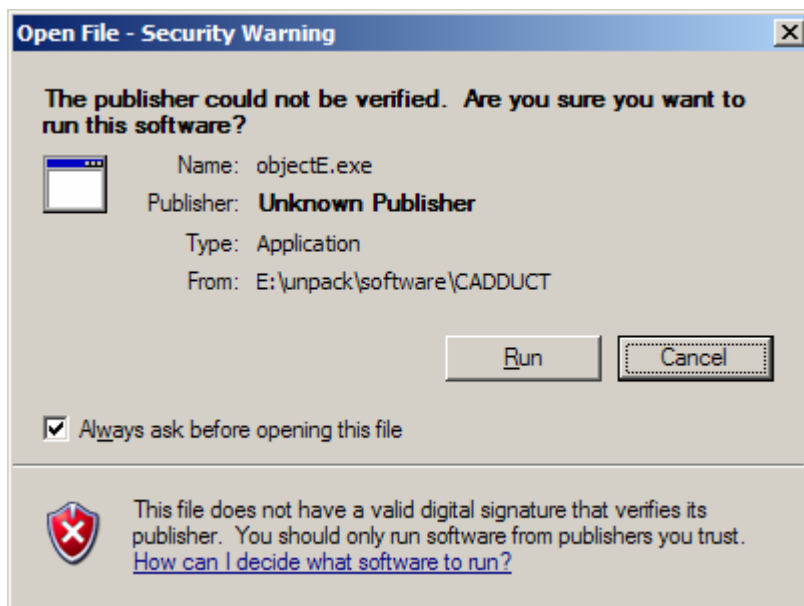
2. Pay close attention to where you “**Save**” the file on your computer.



3. Locate the downloaded file and “Double Click” to run the installer.



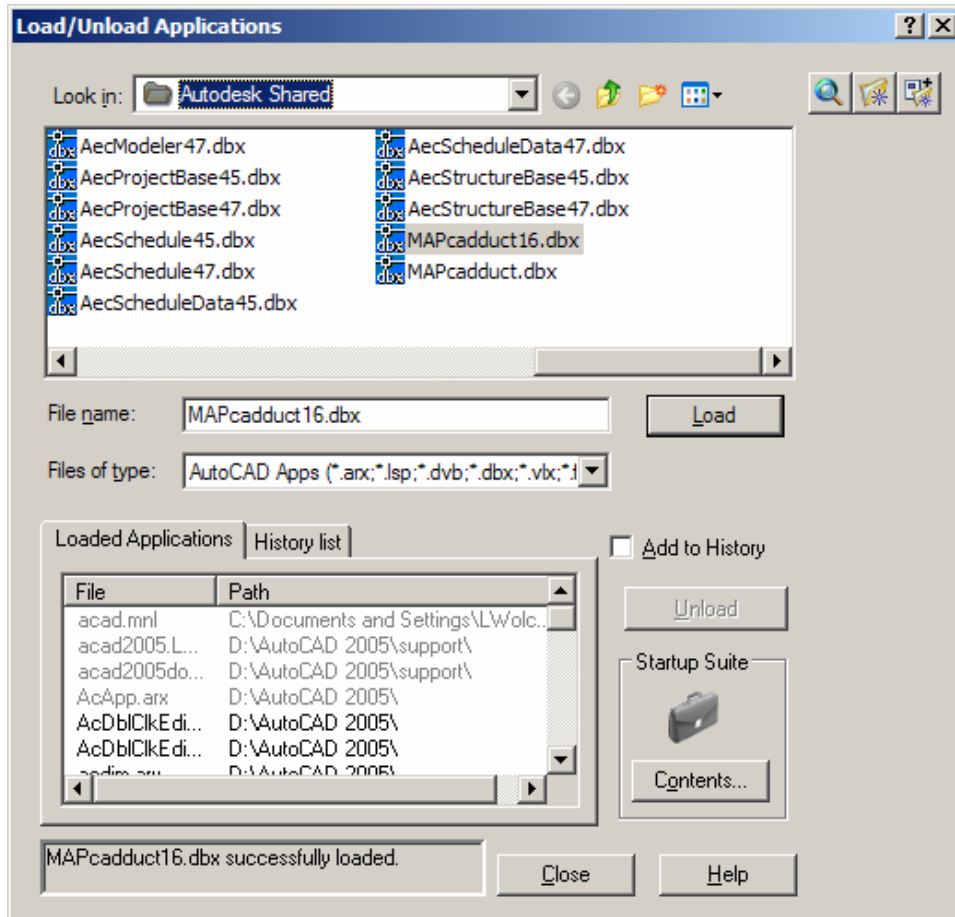
4. Select Run from the “Open File – Security Warning” Dialog.



5. Follow the instructions provided by the install wizard to complete the software installation.

The Object Enabler must be manually loaded into AutoCAD the first time.

6. Type “APPLOAD” at the AutoCAD command prompt, and brows to the “C:\Program Files\Common Files\AutoDesk Shared” folder.



7. Select the appropriate “DBX” file from the folder. (Select only one.)
 - a. MAPcadduct16.dbx should be used with AutoCAD 2004 or newer.
 - b. MAPcadduct.dbx should be used with AutoCAD 2002 or older.
8. Select the “Load” button.
9. Close the dialog when the message box at the bottom reads, “.....dbx successfully loaded.”
10. Open the desired CAD-Duct or CAD-Mech file.

Warning!! Loading the dbx into AutoCAD when CAD-Duct or CAD-Mech is currently running will cause AutoCAD to crash. Make sure that MAPcadduct16.arx or MAPcadduct.arx are not running before loading the dbx.